

# Maytoni Instruction

maytoni.de

Series

Supersymmetry

Pendant lamp

Item

P096PL-L11BK1

Lamp type

Light source

LED 17 W 



Description and purpose of the device

Lighting equipment for general purposes.

Purpose:

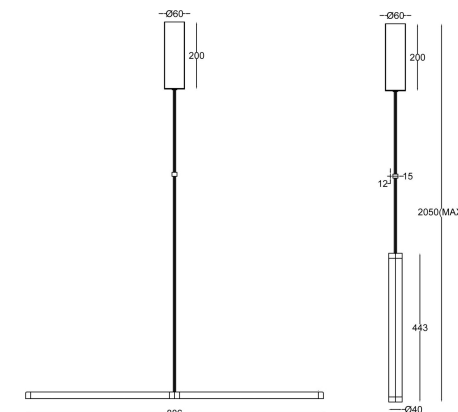
For lighting in trade showrooms, houses, apartments, cottages, houses for indoor and outdoor lighting.

Completing unit

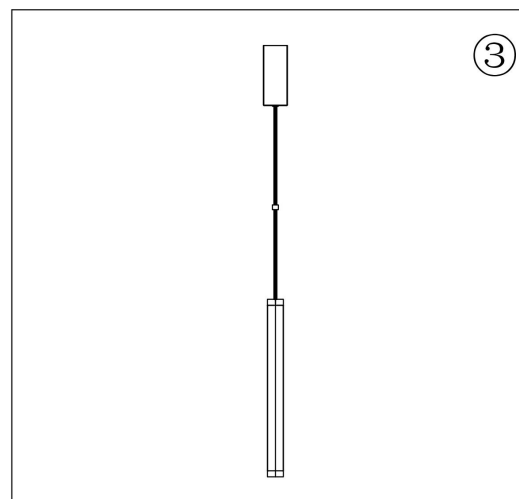
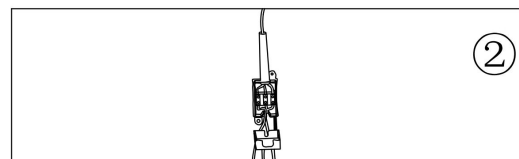
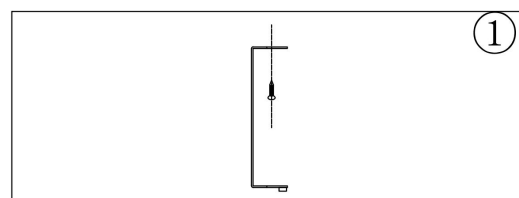
Indicated on the packaging.

Preparation for work and connection to the electric mains

- Make sure the mains power is off.
- Unpack the lamp and check its integrity.
- The installation of the lamp is carried out with the de-energized mains. Prepare a place for installing the lamp: a mounting hole for built-in, a seat for overhead. Route the power wires 220-240V 50Hz to the installation site, including the ground wire, if any.
- Lamps, if necessary, are periodically wiped with a soft damp cloth (the lamp must be turned off).



# Present illuminated<sup>+</sup>



## Warning!

Installation and connection of the lamp must be carried out only by a qualified specialist. Do not use the lamp if there is external damage.



Learn more about Series  
Supersymmetry

# Maintenance and operating rules

P096PL-L11BK1

## Safety Procedures

- Make sure the mains power is de-energized.
- Unpack the lamp and make sure it is intact and complete.
- Lamps, if necessary, are periodically wiped with a soft damp cloth (the lamp must be turned off). De-energize the power before cleaning the product by turning off the switch. Avoid getting moisture into the junction box or any part of the wiring. Let the lamp cool down for 10 minutes before you start cleaning. Use only soft dry cloth.
- The manufacturer guarantees operation for six months from the date of sale through a retail network subject to the conditions of operation, installation and storage. In the event of a malfunction, please contact the retailer.
- The manufacturer and supplier are not responsible for defects that occurred through no fault of the supplier: negligent attitude during transportation, storage, non-compliance with the rules of operation and installation.

- Mounting, dismantling and maintenance of the lamp under voltage is prohibited.
- It is forbidden to disassemble and repair the lamp.
- Installation of the lamp must be carried out by an electrician with a permit to work with voltage up to 1000V.
- It is forbidden to operate the lamp with a damaged diffuser.
- It is forbidden to disassemble, repair or modify the lamp by yourself. In the event of a malfunction, immediately disconnect the lamp from the mains.
- The manufacturer and supplier are not responsible for bodily injury, as well as any damage resulting from improper installation and operation of the lamp.
- It is forbidden to use lamps of higher power than indicated on the packaging / label of the lamp.

### Transportation and storage

The lamps are transported in the original transport packaging by any means of transport provided that they are protected from atmospheric precipitation and mechanical effects that cause damage. Products are allowed to be stored in stacks of no more than 10 products in heated closed and dry warehouses, excluding exposure to moisture and various corrosive media at a distance of at least a meter from heating appliances.

### Certification

The product is certified in accordance with the requirements of the legislation of the country where it is sold. Information is provided in the shipping documentation.

Specifications and information on energy efficiency can be found on the packaging of the product.

The manufacture date is on the individual packaging and on the product itself in the format: month / year.

## Warranty

For warranty repair of the product, contact the local customer manager.

The manufacturing company provides a 2-year warranty for lamps designed for use with incandescent lamps and 3 years for lamps with a built-in LED module.

The warranty comes into effect upon purchase of the product from the distributor/importer and completion of the warranty card. The warranty is not valid in the following cases:

Mechanical damage to the lamp, violation of the installation and operation conditions, as well as unauthorized modification to the product.

Consumable parts (light bulbs, fasteners, screws, etc.) are not covered by the manufacturer's warranty. The manufacturer reserves the right to make changes that do not impair the technical characteristics of the product without prior notice.

### Disposal

At the end of its useful life, this product must be disposed separately. Do not dispose of the products with household, unsorted waste! Send them for recycling. For information on the nearest recycling point, contact your local recycling authorities.

**Note:**  
The claims and warranty do not apply without a seal cash receipt

The goods have been received, I have no complaints about the appearance and configuration, I am familiar with the warranty obligations:

Buyer's signature \_\_\_\_\_

Seller's signature \_\_\_\_\_

Date of sale \_\_\_\_\_

Article \_\_\_\_\_

Manufacturer:  
Specified on the product/label

Importer:  
Specified on the product/label

Trade organization stamp

# Instruction Maytoni –

express yourself

maytoni.de

Description and purpose of the device

General purpose lighting equipment.

Application

The lamp is designed for indoor lighting.

Peculiarities

- Dimming and color temperature adjustment (3000K-6000K)
- Control via Maytoni Smart app or push buttons
- Wi-Fi protocol Bluetooth Mesh (SIG)
- Color rendering index CRI>80 ensures accurate display
- Ability to integrate a remote control into the system, which will allow you to adjust the lighting without entering the application or in situations where the phone is not at hand.

Pendant lamp

**Supersymmetry**

Lamp type

## Pendant lamp

Peculiarities	Scattering angle	Colour	LED	CCT	Control
P096PL-L11WK1	120°	White	17 W	4000K	Bluetooth Mesh
P096PL-L11BK1	120°	Black	17 W	4000K	Bluetooth Mesh



# Present illuminated+

All device functions are only available using the Maytoni Smart mobile app. To install this software on your smartphone, please scan the QR code below. If you can't install the app, then go to Google Play or the App Store and download the app manually.

Available on the  
**App Store**

Available on the  
**Google Play**



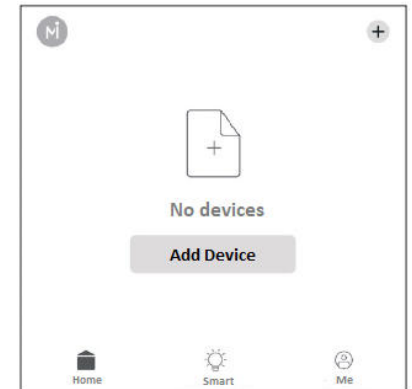
MAYTONI

# Connecting the device to a Wi-Fi network

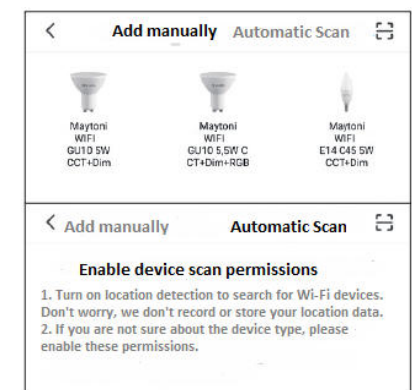
1. Please make sure your Wi-Fi network is 2.4GHz before connecting the lamp, otherwise the device will not be able to connect and control through the mobile app.
2. For a strong signal, additionally connect Bluetooth on your device.
3. Install and launch the Maytoni Smart mobile app.
4. Create an account and register using your email address, follow the instructions to complete this procedure.
5. You will receive a secret code to the email address that was specified during registration then you need to enter it in the appropriate window, come up with a password and complete the registration.



6. Install, connect the lamp and supply power.
7. After applying power to the device and completing the registration, make sure that the lamps blink, which indicates that they are in pairing mode. Within 10 minutes, the lamps need to be added to the application.
8. Select your lamp model or click search for a device in automatic mode.



9. After successfully adding the device, use the necessary functions of the application for easy identification and use of lamps by setting operating modes (changing color temperature, brightness, etc.).



# Applying scripts to device operation

After completing the process of adding a device, name it, link it to a specific room of your home and configure its operation using the functionality of the mobile application, using scripts, by going to the appropriate tab in the main menu, based on your needs and tasks, and then the device will be able to work in fully automatic mode without your participation.

# Advanced application settings

By going to the Profile tab in the main menu of the application, you can personalize your account, link it to voice assistants for even more flexible control of your smart devices.

Add your family members as friends and send them your settings to be able to control lighting from other devices.

